

# STRAUMANN® IMMEDIAXY™

Taking immediacy  
to the next level.



# TAKING IMMEDIACY TO THE **NEXT LEVEL.**

*“More than just a one-stop supplier, Straumann® is a trusted, long-term partner who provides service, training and marketing support to help you grow your practice.”*

Patients' increasing demand for shorter treatment times, the growing evidence for predictable success<sup>8</sup>, and the positive effects on productivity and growth have made immediate treatment protocols a popular choice in implant dentistry.

Backed by its scientific approach and building on its legacy of innovation, Straumann® now takes immediacy to the next level of reliability and efficiency.

their patients with immediate temporization – whenever possible and clinically sensible, whether in single tooth, multiple teeth or full-arch cases.<sup>3, 9-13</sup>

With ImmediaXy™, Straumann® offers an ecosystem of solutions that are designed to enable dental professionals to confidently and efficiently provide

Discover how ImmediaXy™ can support you, for the benefit of your patients and the success of your business.



### END-TO-END

Straumann® ImmediaXy™ includes and seamlessly connects all stages of the workflow: Data Acquisition, Planning&Design, Surgery and Restoration.



### CONFIDENCE

ImmediaXy™ benefits from Straumann's scientific approach, proven expertise and evidence-based solutions.<sup>1-7</sup>



### EFFICIENCY

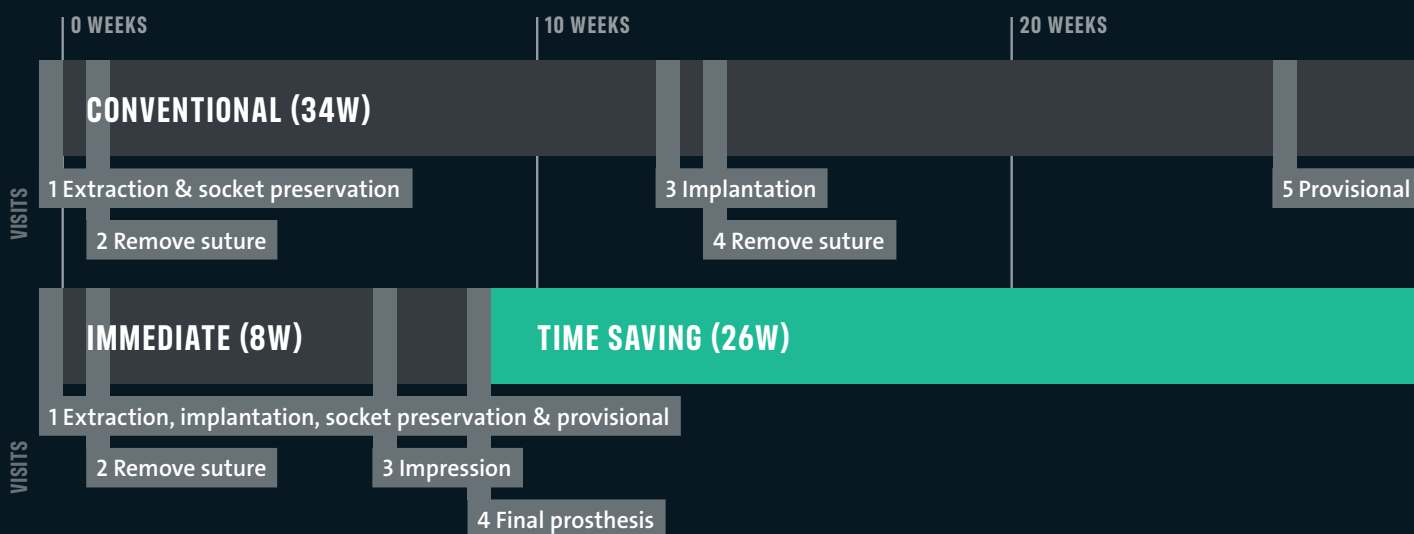
Straumann® ImmediaXy™ puts operational simplicity and workflow optimization at the core of its solutions, whether digital, surgical or restorative.



### COMPREHENSIVE PARTNERSHIP

As a true partner, Straumann® offers service, training and practice growth initiatives in combination with excellent products and solutions.

# STRAUMANN® IMMEDIAXY™ HELPS YOU TO MEET GROWING PATIENT EXPECTATIONS ...



- Shorter time to teeth\*
- Shorter treatment time\*
- Less discomfort\*
- Natural-looking aesthetics

\*compared to conventional treatments



Initial situation



Immediate provisional prosthesis in place

Pictures: Dr. Eirik Aasland Salvesen and Dr. Ida Koll-Frafjord (Oris Academy, Norway)

## ... AND SUPPORTS THE GROWTH AND PRODUCTIVITY OF YOUR PRACTICE

- **Push boundaries with confidence:** our end-to-end solutions are designed to enable immediate treatments with predictable outcomes
- **Gain time & cost efficiency:** enjoy a frictionless and flexible ecosystem that meets your workflow needs
- **Accelerate revenue generation:** our wide portfolio of solutions for immediate treatments enables you to treat complex indications such as full arch rehabilitations in atrophied jaws

30 WEEKS

6 Impression

7 Final prosthesis



Straumann® ImmediaXy™'s integrated ecosystem covers all stages of an immediate workflow for a frictionless experience: Data Acquisition, Planning & Design, Surgery and Restoration. It provides end-to-end solutions, which are designed to enable immediate treatments with predictable outcomes.<sup>11,14,15</sup>

Straumann® ImmediaXy™ makes the benefits of digital dentistry accessible – either in-house or outsourced – and is compatible with third-party solutions. A modular system that can be tailored to support your workflow.



## DATA ACQUISITION



Virtuo Vivo™

IN-HOUSE



3Shape® TRIOS®



Medit® i500

OUTSOURCED

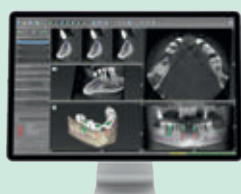
# END-TO-END SOLUTIONS - WHATEVER YOUR WORKFLOW.



## PLANNING & DESIGN

## SURGERY

## RESTORATION



coDiagnostiX®



BLX

TLX

Zygomatic



M series



CARES® Visual

Roxolid®

SLActive®



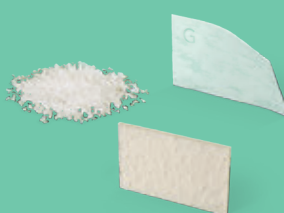
Roxolid® – SLActive®



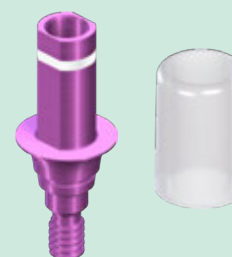
CARES® Customized Prosthetics



CARES® P series



Biomaterials



Immediate Temporary Abutments



Smile in a Box®

# DATA ACQUISITION MADE EASY.

## STRAUMANN® VIRTUO VIVO™

Our newest compact and light-weight intraoral scanner

- Scans an entire dentate arch in just two minutes or a quadrant in under 45 seconds
- Compact handpiece: greater convenience and comfort for the patient
- Validates data quality in real time
- Powderless intraoral scanning in real color



## 3SHAPE® TRIOS®

Rock your practice

- Fast and easy to use to ensure patient comfort
- Includes excitement apps for patient engagement
- Accurate color impressions incl. teeth shade measurements
- Available as a wireless version with long-lasting, rechargeable batteries
- Wide variety of indications, restorative options and materials



## MEDIT® I500

Digital dentistry made easy

- Small tip for high mobility and patient comfort
- Single button control: start, stop, proceed with a single button
- High resolution: recognize all details such as margin lines, undercuts, etc.
- Vivid color: 3D full color streaming capture for precise scans and detail-rich images
- Video type: 3D in-motion video technology for rapid scans



# EFFICIENT PLANNING AND DESIGN.

## CODIAGNOSTIX®

More than implant planning software, coDiagnostiX® is a practice differentiator.

- Enables precise and easy planning for predictable results from simple to advanced cases
- Offers numerous functions, e.g. drill guide design, automatic nerve canal detection and distance monitoring



## CARES® VISUAL

Open design software solution

- Compatible with intraoral scanners, impression scanners and milling machines
- Supports a wide range of applications
- Allows for input and output of STL for third-party systems



## STRAUMANN® CARES® P SERIES

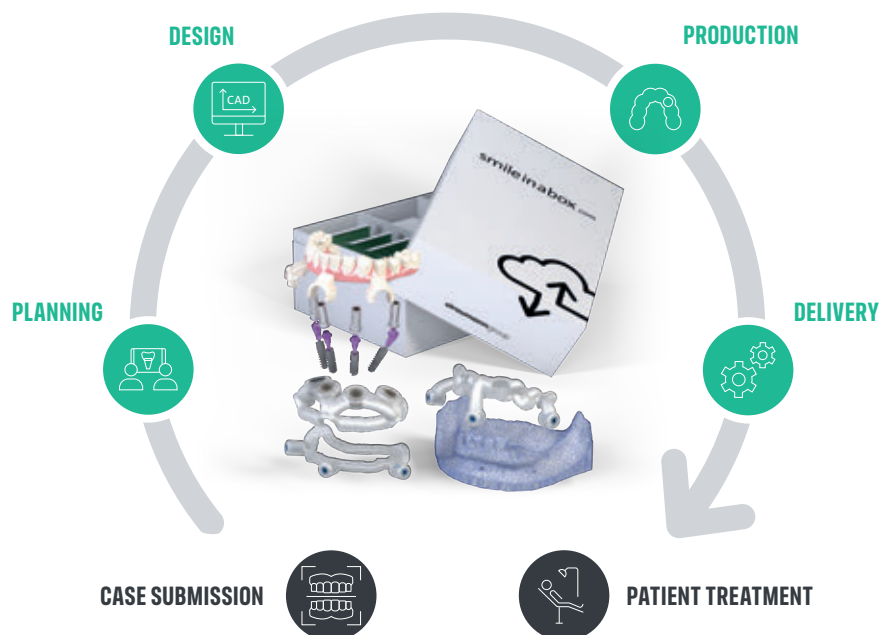
CARES® P series is a new generation of precision 3D printers for fast and professional in-house production of premium-quality dental products on demand. The CARES® P series provides a new experience in professional dental printing in terms of speed, flexibility and open solutions.



# SMILE IN A BOX®

Focus on your passion – we take care of the rest.

Smile in a Box™ is a flexible treatment planning and manufacturing service to gain efficiency and practice growth. You select the workflow steps you want to focus on – we deliver everything you need for your treatment in one box.



# ADVANCED SURGICAL SOLUTIONS.

The Straumann X-Family  
Confidence beyond immediacy at every level

Straumann® BLX and TLX with Dynamic Bone Management have been developed to make immediate protocols achievable, predictable and minimally invasive in all bone types.

- The same endosteal design means the same drill set for both systems.
- Reduced invasiveness: Ø3.75 mm for all tooth positions<sup>13, 16-18</sup>, short implants<sup>19-22</sup>
- One connection for all diameters
- Full digital integration for optimized workflows



## STRAUMANN® BLX

- The new generation of bone-level implant
- Developed for immediate protocols in all bone types.
  - Simple yet versatile portfolio with under-contoured prosthetics for excellent soft-tissue management



## STRAUMANN® TLX

- The proven benefits of tissue level now available also for immediate workflows
- Peri-implant health: no microgap at bone level, immediate soft-tissue attachment preservation
  - Simplicity & efficiency: Built-in emergence profile and simple soft-tissue management, clear view and accessibility of the connection, even in the posterior region
  - Two neck shapes (straight and flaring) for more clinical versatility\*

\*compared to Straumann® TL

## STRAUMANN® ZYGOMATIC IMPLANT SYSTEM

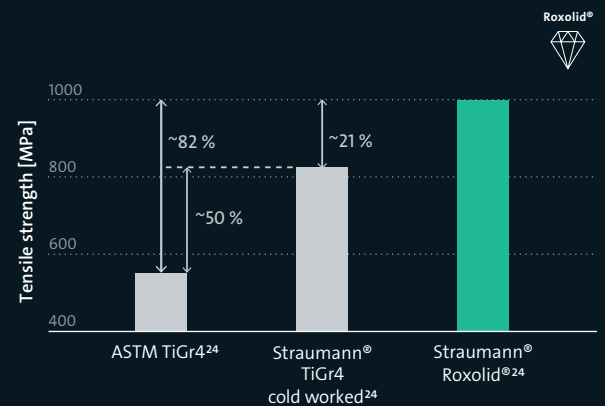
Designed by experts with the patient in mind

- The Straumann® Zygomatic Implant System provides an immediate, graftless, predictable fixed solution for edentulous patients and patients with terminal dentition.
- Two implant designs, ZAGA™ Flat and ZAGA™ Round, to suit the patient's anatomy and bone availability.
- The Straumann® Zygomatic implants are compatible with our Bone Level prosthetic portfolio for fixed overdentures including coping and impression material.



## ROXOLID®

- Reducing invasiveness with smaller and narrower implants<sup>13, 16-22</sup>
- High-performance alloy of 85 % titanium and 15 % zirconium<sup>23</sup>
- Higher tensile<sup>24</sup> and fatigue strength than comparable titanium implants<sup>5, 25</sup>
- Increases treatment options in challenging anatomical situations and narrow interdental spaces<sup>16, 17</sup>
- Preserves vital structures and vascularization<sup>26</sup>

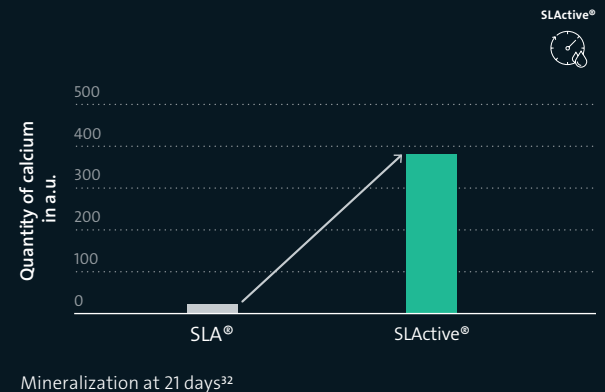


## SLACTIVE®

- For high predictability and accelerated osseointegration
- Hydrophilic surface technology
- Reduces initial healing time\* to 3–4 weeks<sup>\*\* 27, 28</sup>
- Enhanced bone regeneration even at compromised sites<sup>29</sup>
- 98.2% implant survival rate in immediate loading after 10 years<sup>3</sup>
- 100% implant survival rate in irradiated patients with compromised bone after 5 years<sup>30, 31</sup>

\* Healing time defined by bone-to-implant contact and stability

\*\* Compared to SLA®



## STRAUMANN® BIOMATERIALS

Advanced solutions for immediate treatment protocols:

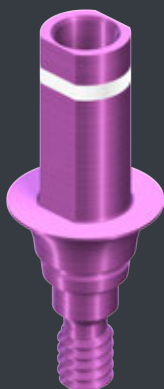
**Straumann® XenoGraft:** Natural, bovine bone substitute for extended stability

**Jason® membrane:** Thin and tear-resistant membrane with a long barrier function, derived from native collagen from porcine pericardium

**mucoderm®:** Stable, easy-to-handle collagen matrix derived from porcine dermis for soft-tissue augmentation; it reduces morbidity and increases patient comfort compared to autogenous grafts



# HIGH RESTORATIVE VERSATILITY.



## IMMEDIATE TEMPORARY ABUTMENTS

For immediate and simple chairside temporization

- Designed for cement-retained crowns on BLT and BLX
- Easy choice of pre-sterilized TAN abutments with varied gingival heights
- The PMMA coping enables extraoral crown finishing

## M SERIES

Professional milling and grinding for your practice

- Benefit from fast prosthesis turnaround times
- Wet, wet/dry and dry milling in a single appliance
- Create an extensive range of restorations for every indication
- Enjoy a wide variety of materials to work from

## STRAUMANN® CARES® CUSTOMIZED PROSTHETICS

Ultimate restorative flexibility

- Performance thanks to best-in-class materials, technologies, services and know-how
- Flexibility with a comprehensive portfolio of restorative options and a choice of in-house or centralized workflows
- Simplicity: the one-stop-shop for all your CAD/CAM restorative needs



## STRAUMANN® PRO ARCH

Tailored to fit. Designed to last.

- **Treatment options:** A variety of options to address specific indications and different patient needs.
- **Immediate loading:** BLT<sup>11, 12</sup>, BLX and TLX implants were designed for reliable primary stability and immediate loading.
- **Reduced invasiveness:** Roxolid® enables the use of narrow<sup>13, 16-18</sup> and short implants<sup>19-22</sup> designed to preserve bone and avoid severe grafting.
- **Compromised patients:** Peace of mind with SLActive® even when treating compromised patients with diabetes or irradiated patients.<sup>30, 31, 33</sup>
- **Restorative flexibility:** The prosthetic portfolio addresses patients' esthetic expectations within their financial resources.
- **Practice growth:** Practice development and patient communication tools support your practice growth.



# STRAUMANN® IMMEDIAXY™ IN PRACTICE.

Replacement of a deciduous canine with immediate, computerguided implant placement and immediate prosthesis.

- 31 year-old female
- Complex anatomy due to impacted tooth 23

- Deciduous tooth 23 still in place and mobile
- Patient's wish for short treatment and high esthetics at all times



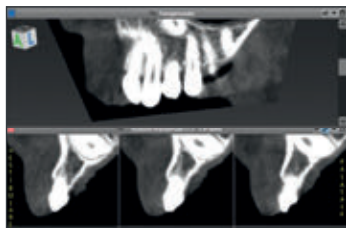
Dr Sergio Piano  
DDS, Genoa, Italy

Acknowledgements: Alessandro Giacometti, dental technician (Genoa, Italy) and Dr Luca Repetto, DDS (Genoa, Italy)

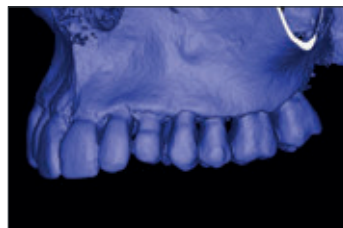
## DATA ACQUISITION



Initial situation with deciduous tooth 23



The CBCT exam shows the impacted canine and limited space available

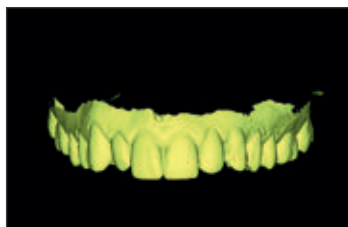


Assessment of bone availability with CBCT

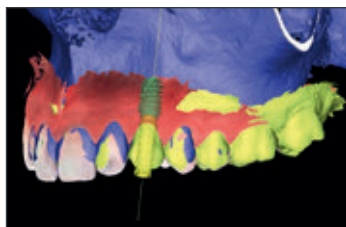


Optical impression with Virtuo Vivo™

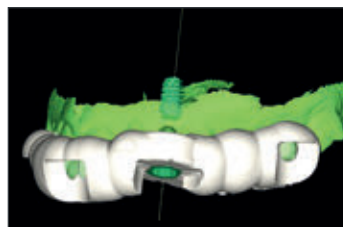
## PLANNING & DESIGN



Digital wax-up of tooth 23



Superimposition of the files in coDiagnostiX® to plan the implant and temporary abutment



Design of surgical guide based on correct sleeve alignment



The guide is printed and the sleeve is glued into place

## SURGERY



Simple extraction due to root resorption



Fully-guided drilling with VeloDrill™ system



Guided placement of a BLX implant (Ø4.5mm x 8mm)



Occlusal view after implant placement

## RESTORATION



Provisional crown fitted on resin model



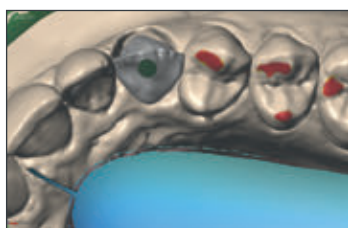
The provisional crown is accurately placed on the abutment with a mask



Provisional crown in place, out of occlusion



The post-operative X-ray confirms the precise placement



Design of final crown in DWOS® CAD/CAM



Final, screw-retained zirconia crown on Variobase®



Esthetic integration of the final crown



The patient's smile at the end of the treatment

# Compromised maxillary dentition treated with Straumann® Pro Arch in a digital workflow

- 51 year-old male
- Smoker (< 10 cigarettes per day)

- Soft bone quality: types 3 and 4
- Limited bone availability in the posterior area



**Dr Tran Thanh Phong**  
DDS, MS, Ho Chi Minh  
City, Vietnam

## DATA ACQUISITION



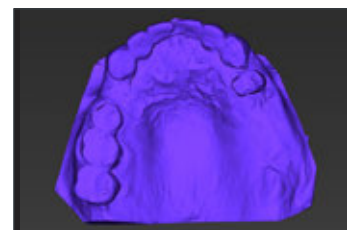
DSD file of the initial situation



Initial situation: gingival inflammation and recession are visible

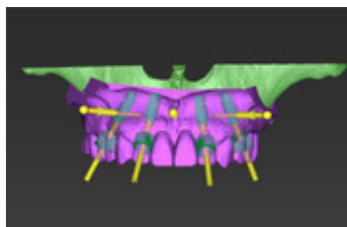


The CBCT shows decayed roots and bone resorption

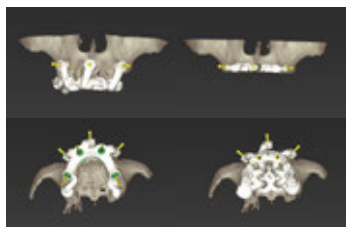


Digital scan of the initial maxillary situation

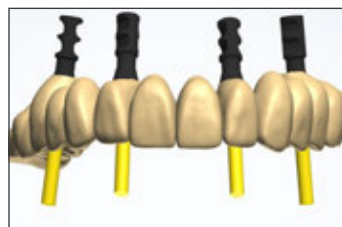
## PLANNING & DESIGN



Matching of the surgical and prosthetic plans in coDiagnostiX®



Designs of the guides for pin fixation, bone reduction, drilling and bite registration

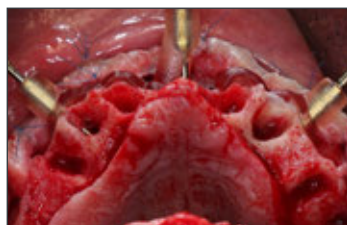


Computer-assisted design of the temporary PMMA prosthesis



The milled PMMA bridge on a model

## SURGERY



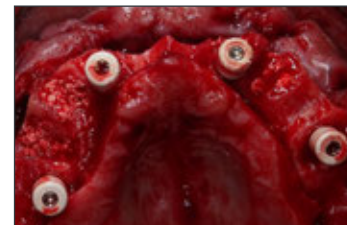
The bone reduction guide is placed after the atraumatic tooth extractions



Fully-guided drilling with VeloDrills™ as per the pre-defined surgical protocol



Guided placement of the BLX implants (Ø4.5 mm x 12 mm), torqued at 50 Ncm



The screw-retained abutments and protective caps. cerabone® 1–2 mm has been added.

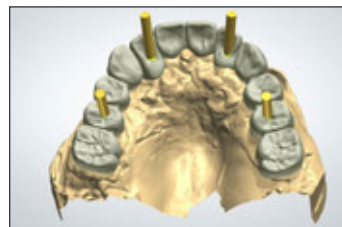
## RESTORATION



Try-in of the temporary PMMA bridge prior to suturing



Temporary PMMA bridge in place after suturing



Computer-assisted design of the final zirconia bridge



Consideration of the bite registration thanks to a virtual articulator



Final multilayered full-contour zirconia bridge cemented on Variobase® copings



Occlusal view of the final prosthesis



The patient's smile at the end of the treatment



Panoramic radiograph after 5 days

## REFERENCES

- 1 van Velzen FJJ, Ofec R, Schulten EAJM, Ten Bruggenkate CM. 10-year survival rate and the incidence of peri-implant disease of 374 titanium dental implants with a SLA surface: a prospective cohort study in 177 fully and partially edentulous patients. *Clinical oral implants research*. 2015;26(10):1121-1128. 2 Kim S, Jung UW, Cho KS, Lee JS. Retrospective radiographic observational study of 1692 Straumann tissue-level dental implants over 10 years: I. Implant survival and loss pattern. *Clin Implant Dent Relat Res*. Oct 2018;20(5):860-866. 3 Nicolau P, Guerra F, Reis R, Krafft T, Benz K, Jackowski J. 10-year outcomes with immediate and early loaded implants with a chemically modified SLA surface. *Quintessence Int*. Jan 25 2019;50(2):114-124. 4 Grandin HM, Berner S, Dard M. A Review of Titanium Zirconium (TiZr) Alloys for Use in Endosseous Dental Implants. *Materials*. 2012;5(8):1348-1360. 5 Altuna P, Lucas-Taulé E, Gargallo-Albiol J, Figueras-Álvarez O, Hernández-Alfaro F, Nart J. Clinical evidence on titanium-zirconium dental implants: a systematic review and meta-analysis. *Int J Oral Maxillofac Surg*. Jul 2016;45(7):842-850. 6 Herrmann J, Hentschel A, Glauche I, Vollmer A, Schlegel KA, Lutz R. Implant survival and patient satisfaction of reduced diameter implants made from a titanium-zirconium alloy: A retrospective cohort study with 550 implants in 311 patients. *J Craniomaxillofac Surg*. Dec 2016;44(12):1940-1944. 7 Calvo-Guirado JL, López Torres JA, Dard M, Javed F, Pérez-Albacete Martínez C, Maté Sánchez de Val JE. Evaluation of extrashort 4-mm implants in mandibular edentulous patients with reduced bone height in comparison with standard implants: a 12-month results. *Clin Oral Implants Res*. Jul 2016;27(7):867-874. 8 Chen ST, Wilson TG, Jr., Hämmerle CH. Immediate or early placement of implants following tooth extraction: review of biologic basis, clinical procedures, and outcomes. *Int J Oral Maxillofac Implants*. 2004;19 Suppl:12-25. 9 Ganeles J, Zollner A, Jackowski J, ten Bruggenkate C, Beagle J, Guerra F. Immediate and early loading of Straumann implants with a chemically modified surface (SLActive) in the posterior mandible and maxilla: 1-year results from a prospective multicenter study. *Clin Oral Implants Res*. Nov 2008;19(11):1119-1128. 10 De Macedo D, Madeira H, Jarry C. Single molar replacement immediately loaded with final crown through Straumann BLX and chairside digital workflow—One tooth one time technique. *Clinical Oral Implants Research*. 2019;30:242-242. 11 Eckert SE, Hueler G, Sandler N, Elkattah R, McNeil DC. Immediately Loaded Fixed Full-Arch Implant-Retained Prosthesis: Clinical Analysis When Using a Moderate Insertion Torque. *Int J Oral Maxillofac Implants*. May/June 2019;34(3):737-744. 12 Eskan MA, Uzel G, Yilmaz S. A fixed reconstruction of fully edentulous patients with immediate function using an apically tapered implant design: a retrospective clinical study. *Int J Implant Dent*. Nov 23 2020;6(1):77. 13 Coskunes FM, Tak Ö. Clinical performance of narrow-diameter titanium-zirconium implants in immediately loaded fixed full-arch prostheses: a 2-year clinical study. *Int J Implant Dent*. Apr 16 2021;7(1):30. 14 Chmielewski K, Ryncarz W, Yüksel O, et al. Image analysis of immediate full-arch prosthetic rehabilitations guided by a digital workflow: assessment of the discrepancy between planning and execution. *International journal of implant dentistry*. 2019;5(1):26-26. 15 Arcuri C, Barlattani A, Mazzetti V, Carosi P, Ferrigno N. Immediate restoration of a single upper central integrating digital workflow and a novel dental implant: a case report. *Journal of biological regulators and homeostatic agents*. 2019;33(6):171-177. 16 Al-Nawas B, Domagala P, Fragola G, et al. A Prospective Noninterventive Study to Evaluate Survival and Success of Reduced Diameter Implants Made From Titanium-Zirconium Alloy. *J Oral Implantol*. Aug 2015;41(4):e118-125. 17 Chiapasco M, Casentini P, Zaniboni M, Corsi E, Anello T. Titanium-zirconium alloy narrow-diameter implants (Straumann Roxolid((R))) for the rehabilitation of horizontally deficient edentulous ridges: prospective study on 18 consecutive patients. *Clin Oral Implants Res*. Oct 2012;23(10):1136-1141. 18 Corcuera-Flores JR, Pérez-Fierro M, Blanco-Carrión A, Torres-Lagares D, Castellanos-Cosano L, Machuca-Portillo G. Bone loss around narrow implants versus standard diameter implants: Retrospective 2-years case-control study. *J Clin Exp Dent*. Jan 2020;12(1):e79-e84. 19 Caramés J, Pinto AC, Caramés G, Francisco H, Fialho J, Marques D. Survival Rate of 1008 Short Dental Implants with 21 Months of Average Follow-Up: A Retrospective Study. *J Clin Med*. Dec 5 2020;9(12). 20 Gašperšič R, Dard M, Linder S, Oblak Č. One-Year Results Assessing the Performance of Prosthetic Rehabilitations in the Posterior Maxilla Supported by 4-mm Extrashort Implants Splinted to 10-mm Implants: A Prospective Case Series. *Int J Oral Maxillofac Implants*. Mar-Apr 2021;36(2):371-378. 21 Schimmel M, Janner SFM, Joda T, Wittneben JG, McKenna G, Brägger U. Mandibular implant-supported fixed complete dental prostheses on implants with ultrashort and standard length: A pilot treatment. *J Prosthet Dent*. Jul 28 2020. 22 Slotte C, Grønningaeter A, Halmøy AM, et al. Four-millimeter implants supporting fixed partial dental prostheses in the severely resorbed posterior mandible: two-year results. *Clin Implant Dent Relat Res*. May 2012;14 Suppl 1:e46-58. 23 Brizuela-Velasco A, Perez-Pevida E, Jimenez-Garrudo A, et al. Mechanical Characterisation and Biomechanical and Biological Behaviours of Ti-Zr Binary-Alloy Dental Implants. *Biomed Res Int*. 2017;2017:2785863. 24 Data on file. 25 Medvedev AE, Molotnikov A, Lapovok R, et al. Microstructure and mechanical properties of Ti-15Zr alloy used as dental implant material. *J Mech Behav Biomed Mater*. Sep 2016;62:384-398. 26 Altinci P, Can G, Gunes O, Ozturk C, Eren H. Stability and Marginal Bone Level Changes of SLActive Titanium-Zirconium Implants Placed with Flapless Surgery: A Prospective Pilot Study. *Clin Implant Dent Relat Res*. Dec 2016;18(6):1193-1199. 27 Buser D, Broggini N, Wieland M, et al. Enhanced bone apposition to a chemically modified SLA titanium surface. *J Dent Res*. Jul 2004;83(7):529-533. 28 Lang NP, Salvi GE, Huynh-Ba G, Ivanovski S, Donos N, Bosshardt DD. Early osseointegration to hydrophilic and hydrophobic implant surfaces in humans. *Clin Oral Implants Res*. Apr 2011;22(4):349-356. 29 El Chaar E, Zhang L, Zhou Y, et al. Osseointegration of Superhydrophilic Implants Placed in Defect Grafted Bones. *Int J Oral Maxillofac Implants*. March/April 2019;34(2):443-450. 30 Heberer S, Kilic S, Hossamo J, Raguse JD, Nelson K. Rehabilitation of irradiated patients with modified and conventional sandblasted acid-etched implants: preliminary results of a split-mouth study. *Clin Oral Implants Res*. May 2011;22(5):546-551. 31 Nack C, Raguse JD, Stricker A, Nelson K, Nahles S. Rehabilitation of irradiated patients with chemically modified and conventional SLA implants: five-year follow-up. *J Oral Rehabil*. Jan 2015;42(1):57-64. 32 Kopf BS, Ruch S, Berner S, Spencer ND, Maniura-Weber K. The role of nanostructures and hydrophilicity in osseointegration: In-vitro protein-adsorption and blood-interaction studies. *J Biomed Mater Res A*. Aug 2015;103(8):2661-2672. 33 Cabrera-Domínguez JJ, Castellanos-Cosano L, Torres-Lagares D, Pérez-Fierro M, Machuca-Portillo G. Clinical performance of titanium-zirconium implants with a hydrophilic surface in patients with controlled type 2 diabetes mellitus: 2-year results from a prospective case-control clinical study. *Clin Oral Investig*. Jul 2020;24(7):2477-2486.

## International Headquarters

Institut Straumann AG

Peter Merian-Weg 12

CH-4002 Basel, Switzerland

Phone +41 (0)61 965 11 11

Fax +41 (0)61 965 11 01

[www.straumann.com](http://www.straumann.com)

Virtuo Vivo™, DWOS® and coDiagnostiX® are trademarks or registered trademarks of Dental Wings Inc., Montreal, Canada.

Smile in a Box®, VeloDrill™, Straumann®, CARES®, Variobase®, Roxolid®, SLA® and SLActive® are trademarks or registered trademarks of Institut Straumann AG, Basel, Switzerland.

3Shape® and TRIOS® are registered trademarks of 3Shape A/S, Copenhagen, Denmark.

Medit® is a registered trademark of Medit Corp., Seoul, South Korea.

Jason®, mucoderm® and cerabone® are registered trademarks of botiss biomaterials GmbH, Zossen, Germany.

ZAGA™ is a trademark of Zygomia ZAGA Centers, S.L., Barcelona, Spain.

© Institut Straumann AG, 2023. All rights reserved.

Straumann® and/or other trademarks and logos from Straumann® mentioned herein are the trademarks or registered trademarks of Straumann Holding AG and/or its affiliates.